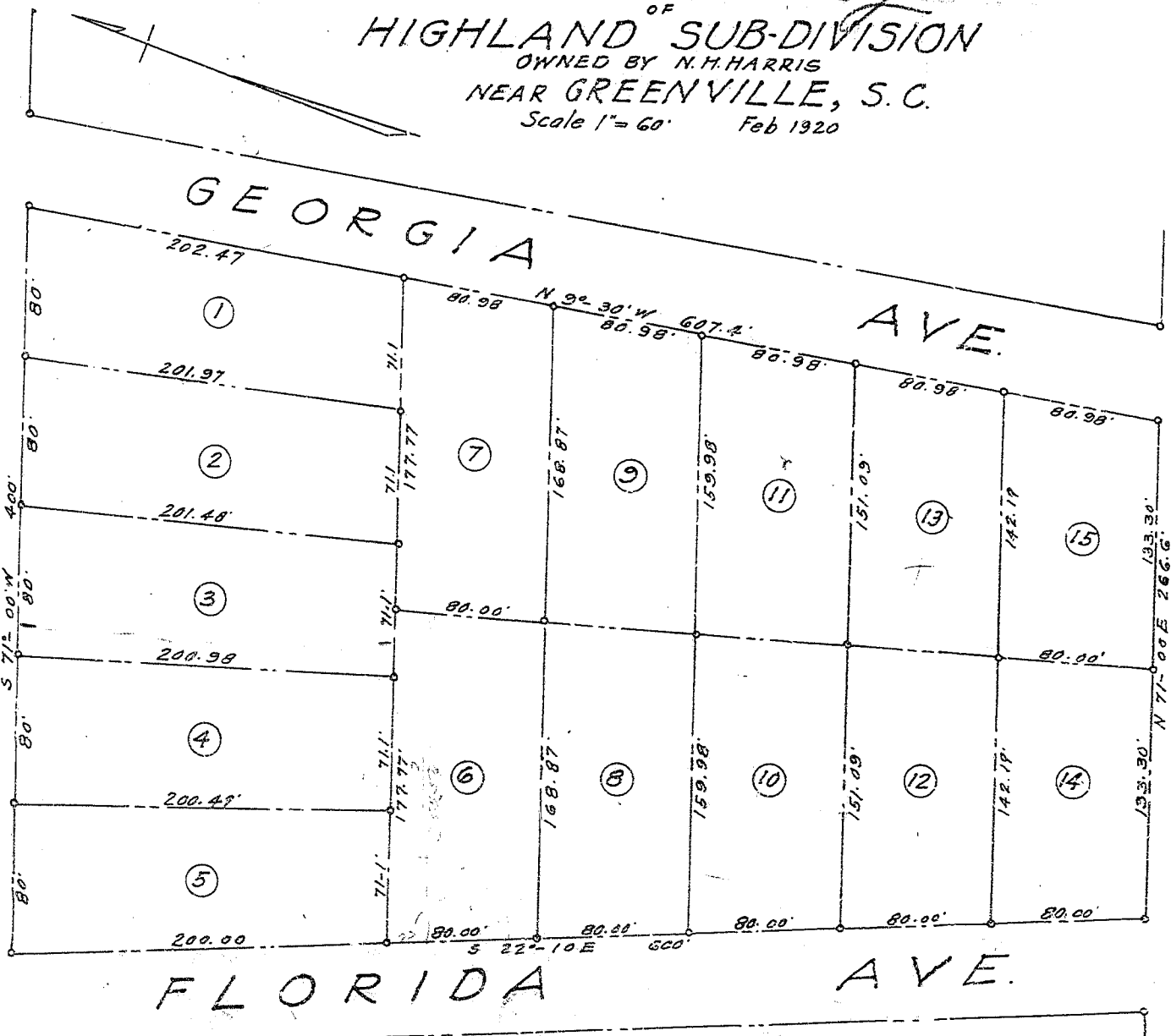


BLOCK "N" <sup>2</sup>  
OF  
HIGHLAND SUB-DIVISION  
OWNED BY N.H. HARRIS  
NEAR GREENVILLE, S.C.  
Scale 1" = 60' Feb 1920

To Greenville +

EASLEY BRIDGE ROAD



PEACHTREE ST.

ORIGINALLY SURVEYED  
AND PLATTED BY W.D. NEVES, C.E.

LAID OUT AND RE-PLATTED BY  
Fitzpatrick-Terry Co. Engrs.

See plat  
C/2057

208

BAD COPY